



# MONTHLY MEMBERSHIP PROGRESS REPORT

District 201W2

Results as of: 04/30/2018

GMT: ANN ELDRIDGE

LOCATION AUSTRALIA

GMT CA

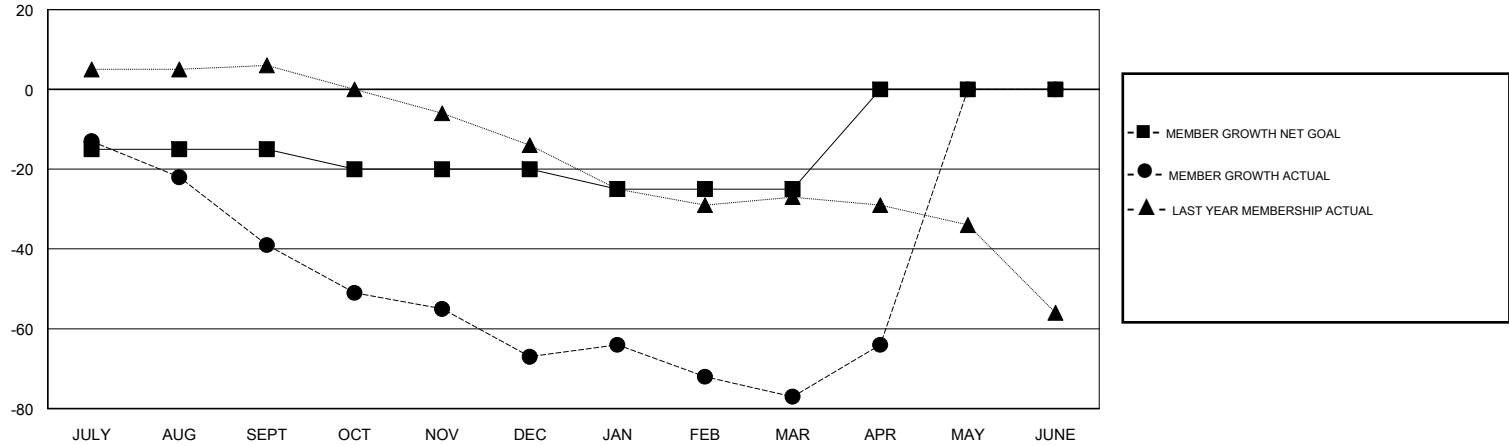
Clubs			
RESULTS FOR 2017-2018			
QUARTER	NEW CLUB GOAL	NEW CLUBS	DROPPED CLUBS
JULY/AUG/SEPT	0	0	1
OCT/NOV/DEC	0	0	3
JAN/FEB/MAR	0	0	0
APR/MAY/JUNE	0	0	0

Members			
RESULTS FOR 2017-2018			
QUARTER	MEMBER GROWTH NET GOAL	MEMBER GROWTH ACTUAL	DROPPED MEMBERS ACTUAL (including transfers)
JULY/AUG/SEPT	-15	33	57
OCT/NOV/DEC	-5	16	41
JAN/FEB/MAR	-5	49	48
APR/MAY/JUNE	25	26	11

GOALS AND ACTUAL NEW CLUBS CUMULATIVE



GOALS AND ACTUAL MEMBERS CUMULATIVE



DROPPED CLUBS: 4	33 CLUBS OF 66 ADDED 1 OR MORE NEW MEMBERS	<u>GENDER DISTRIBUTION</u> MALE 951 (67.88%) FEMALE 450 (32.12%) Women Percentage Fiscal Year Goal: 50%
<u>DROPPED MEMBERS</u> DECEASED 8 CLUB CANCELLED 4 OTHER 145 TOTAL 157	<a href="#">CLICK HERE FOR CUMULATIVE MEMBERSHIP DATA</a>	TOTAL FAMILY UNIT MEMBERS 232 FAMILY MEMBERS PAYING HALF DUES 117